

SKETCH OF

LOT 144  
REGISTRAR'S COMPILED PLAN 692

Town of Niagara-on-the-Lake

REGIONAL MUNICIPALITY OF NIAGARA

MATTHEWS, CAMERON, HEYWOOD - KERRY T. HOWE SURVEYING LIMITED

10 0 10 20 30 METRES  
1 : 500

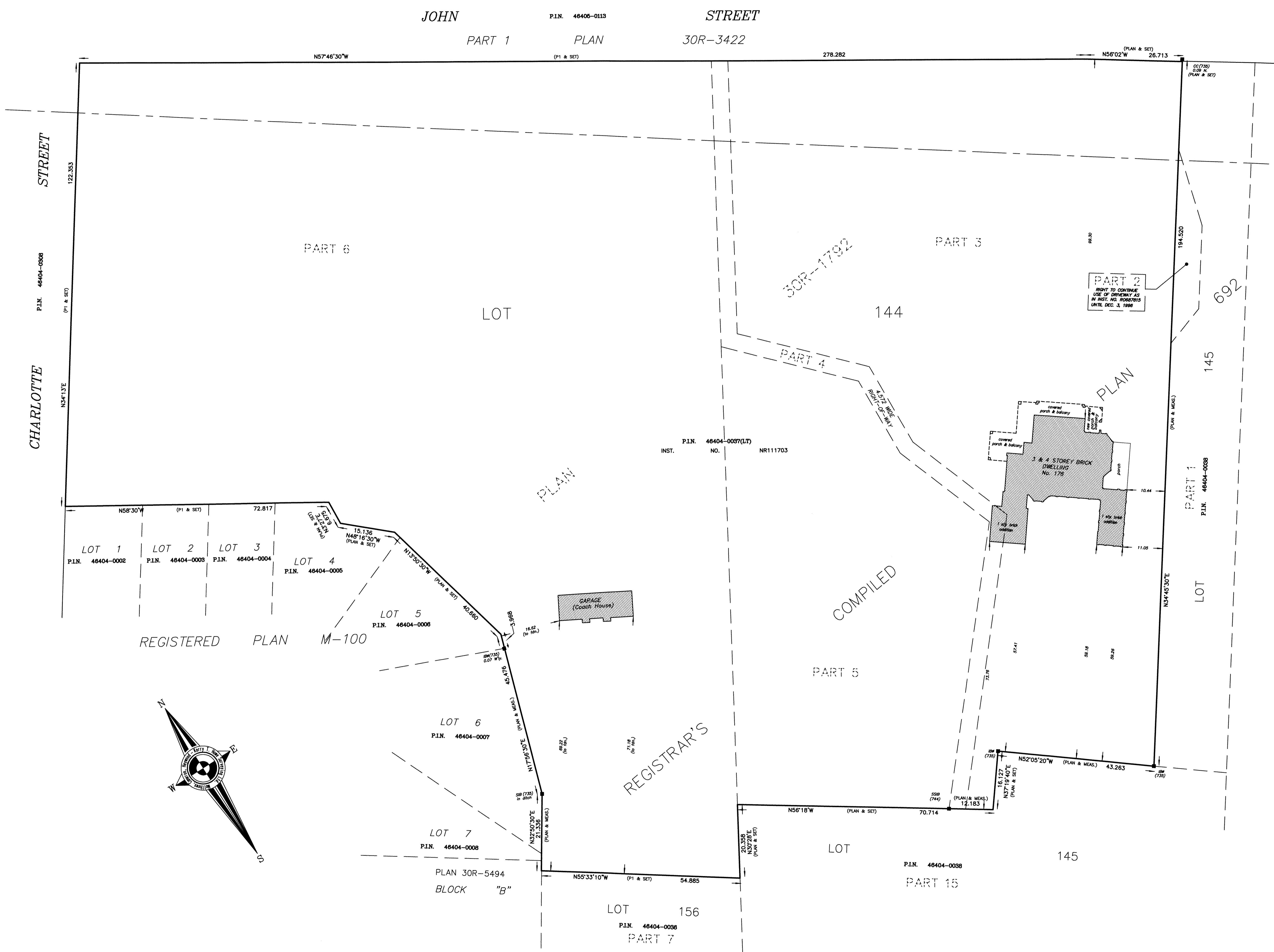
2011

**SURVEYOR'S CERTIFICATE**

I CERTIFY THAT THE FIELD WORK REPRESENTED ON THIS SKETCH WAS COMPLETED  
July 12, 2011

July 19, 2011  
Date

*Andrew Cameron*  
ANDREW CAMERON  
Ontario Land Surveyor



**LEGEND**

—	DEITCHES	SURVEY MONUMENT FOUND
—	IT	SURVEY MONUMENT SET
—	CC	IRON TUBE
—	CC	CAST IRON
—	IB	IRON BAR
—	SB	SHORT STANDARD IRON BAR
—	SB	STANDARD IRON BAR
—	IB	ROUND IRON BAR
—	IB	ROUND IRON BAR
—	(+)	WITNESS
—	PLAN	PLAN 30R-1792
—	735	K.T. HOWE, O.L.S.
—	D.G.	D.G. URE, O.L.S.
—	MC 24	Matthews, Cameron, Heywood - Kerry T. Howe SURVEYING LTD.
—	R	PLAN BY M&C SC-93-54 (L.N. 52976)

**MATTHEWS, CAMERON, HEYWOOD - KERRY T. HOWE SURVEYING LTD.**  
 8233 Starry Avenue - Unit #1, Niagara Falls, Ontario L2E 7C2 Phone: (905) 358-3883  
 Fax: (905) 358-8224 St. Catharines Phone: (905) 687-3300  
 www.thesurveyors.ca

Drawn by S.S. Checked A.C. LLN. 59334 File SC-2011-63